



*Imaging Software*

NIS Elements

*Advanced Solutions for your Imaging World*

# Nikon offers a total software solution for image capturing, archiving, and analysis

## Why NIS-Elements?

NIS-Elements is an integrated software imaging platform which delivers comprehensive control of microscopes and peripheral devices, image capturing, documentation, image analysis and data management of up to six dimensions. This system contributes to experiment efficiency with intuitive image analysis features and database building capabilities developed to handle archiving and management of large numbers of multidimensional image files. Unified control of the entire imaging system offers significant benefits to users for cutting-edge research, such as live cell imaging.

## Total Imaging Solution

Designed to serve the needs of advanced bio research, clinical, industrial and documentation professionals, NIS-Elements provides a totally integrated solution for users of Nikon and other manufacturers' accessories by delivering automated intelligence to microscopes, cameras, and peripheral components. The software optimizes the imaging process and workflow and provides the critical element of information management for system-based microscopy.



## Highest Quality Optical Performance

The world-renowned Nikon CFI60 infinity optical system has effectively set a new standard for optical quality by providing longer working distances, higher numerical apertures, and the widest magnification range and documentation field sizes. Nikon's new objectives and accessories are specifically engineered for digital imaging.

## Diverse Line of Powerful Digital Cameras

Nikon offers a full line of digital cameras, addressing the varied needs of users in multiple disciplines. Each Nikon digital camera is designed to work seamlessly with Nikon microscopes, peripherals, and software. With Nikon Digital Sight (DS) series cameras, even novice users can take beautiful and accurate microscopic images. For the advanced researcher, high resolution image capturing and versatile camera control is fast and simple.



**Ar**

NIS-Elements AR is optimized for advanced research applications, featuring fully-automated acquisition and device control through full 6D (X, Y, Z, Lambda (Wavelength), Time, Multipoint) image acquisition and a wide range of image analyses.

**Br**

NIS-Elements BR is suited for standard research applications, photodocumentation of fluorescent samples and image analysis, including intensity and counting measurements. It features acquisition and device control through 4D (up to four dimensions can be selected from X, Y, Z, Lambda (Wavelength), Time, Multipoint) acquisition.

**D**

NIS-Elements D supports color documentation requirements in bio research, clinical and industrial applications, with basic measuring and reporting capabilities.

## Main Features

	AR	BR	D
	MDI (Multiple Document Interface)	MDI (Multiple Document Interface)	SDI (Single Document Interface)
Window style			
Dark color scheme	○	○	—
Industrial simple GUI	—	—	○
Camera control	○	○	○
Microscope control	○	○	○
Nikon made peripheral control	○	○	○
Non-Nikon peripheral control	○	○	○
Live image capture	○	○	○
Time-lapse image capturing (T)	○	○	△
Z-series image capturing (Z)	○	○	○
Multichannel image capturing ( λ )	○	○	—
Multipoint image capturing (MP)	○	○	○
Multidimensional image capturing	● Up to 6D	● Up to 4D	—
Stimulation experiment	●	—	—
RAM capture	○	—	—
HDR image capture	○	●	●
AVI live-stream capture	○	○	○
Objective calibration	○	○	○
Capturing data savings (Meta-data)	○	○	○
Image filtering	○	△	△
Binary	○	△	▲
LUT (look up table)	○	○	○
Histogram	○	○	○
Manual measurement	○	○	○
Auto measurement	○	○	●
Intensity line profile	○	○	○
Intensity surface plot	○	○	○
Time (intensity) measurement	○	●	—
3D measurement	●	▲	▲
Volume measurement	○	—	—
Database	●	●	●
Macro	○	△	△
Advanced interpreter	○	●	●
Report generator	○	○	○
Live compare	○	●	●
Volume view	○	△	△
EDF (Extended depth of focus)	●	●	●
3D surface view	●	●	●
Ratio view	○	—	—
2D real time deconvolution	●	—	—
2D deconvolution	●	—	—
3D deconvolution	●	—	—
3D blind deconvolution	●	—	—
TTL/analog IO	●	●	●
Object classifier	●	—	—
2D/3D object tracking	●	—	—
Calcium & FRET	●	—	—
General analysis	●	—	—
HC Template	●	—	—
JOBS Editor	●	—	—
N-SIM analysis	●	—	—
N-SIM offline analysis	●	—	—
N-STORM analysis	●	—	—
N-STORM offline analysis*	●	—	—
Metalogical analysis	—	—	●
Illumination sequence	●	—	—
Stage incubator control	●	—	—
Dual camera support	●	—	—

○ : Full function △ : Limited function —: Not available ● / ▲ : Option

\* N-STORM analysis is required.

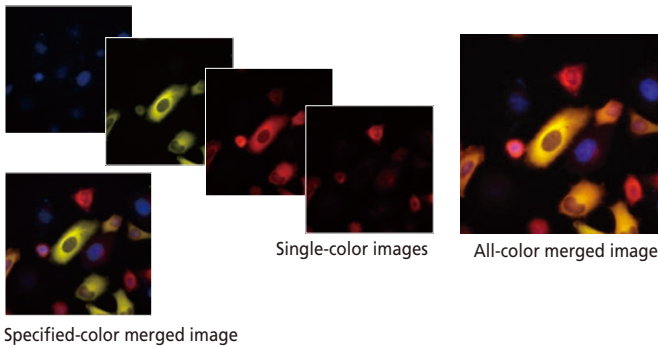
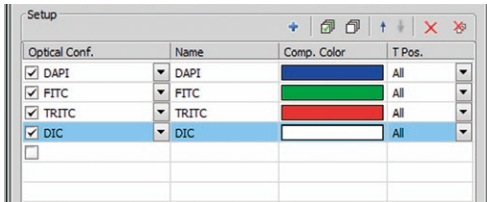


# Image Acquisition

NIS-Elements offers the most suitable image acquisition for various applications with the integrated control of the camera, motorized microscope and peripheral devices.

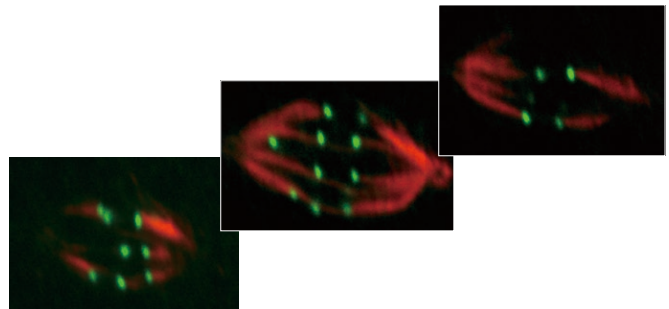
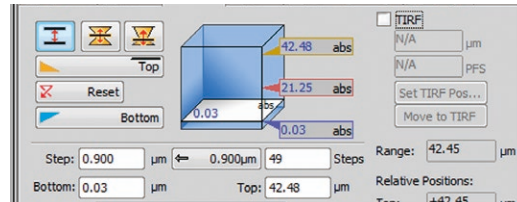
## Multichannel (multi color) Ar Br

NIS-Elements can acquire full bit depth multi-color images, combining multiple fluorescence wavelengths and different illumination methods (DIC, phase contrast etc.), while offering independently scalable channels.



## Z-series Ar Br D

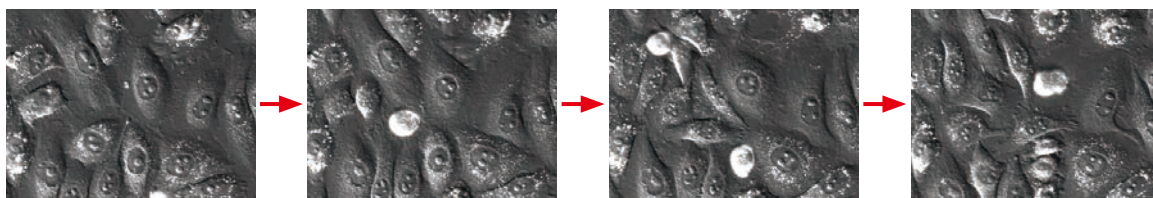
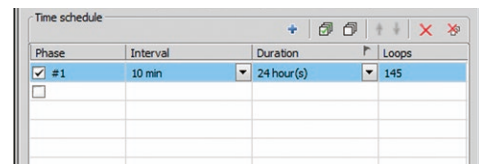
Through motorized focus control, NIS-Elements reconstructs and renders 3D images from multiple Z-axis planes.



## Time Lapse Ar Br D

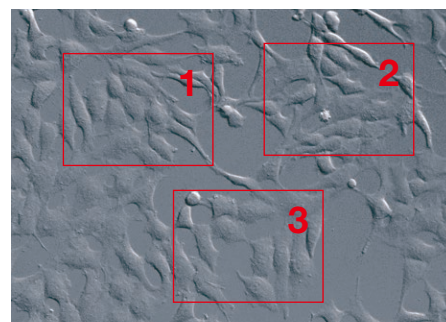
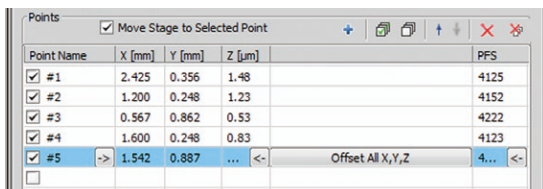
Time lapse imaging in NIS-Elements is easily configurable simply by setting the time interval and duration of capture.

The Perfect Focus System of the motorized inverted microscope Ti-E enables high-accuracy image capture without focus drifting even during extended time time-lapse experiments.



## Multipoint Experiments Ar Br D

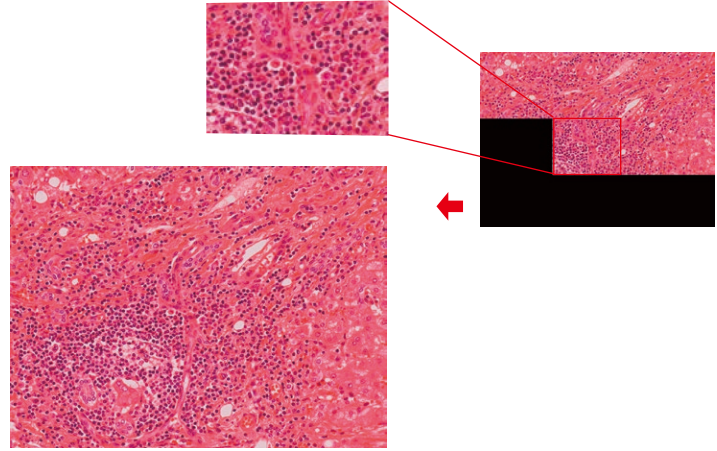
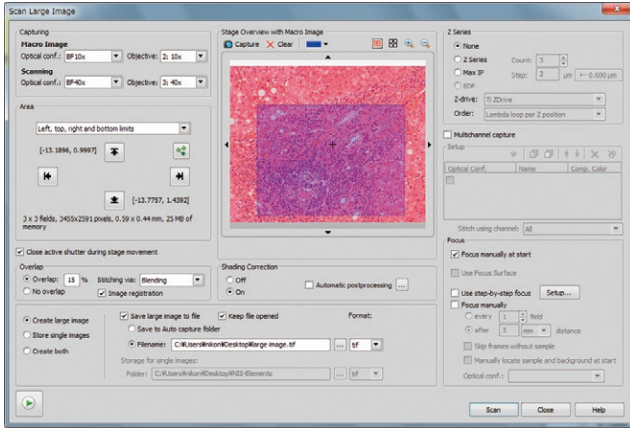
NIS-Elements' motorized stage control offers automated travel to multiple stage points of the sample of a multi-well plate or dish. Stage points are memorized and can be saved and loaded for future imaging sessions.



## Image Stitching (Large image)



Large Image Acquisition generates a single high-magnification wide field-of-view image by automatically stitching multiple adjacent frames from a multipoint acquisition using a motorized stage or from multiple single images captured from a previous session. Users can easily select image acquisition ranges and areas from low magnification images.



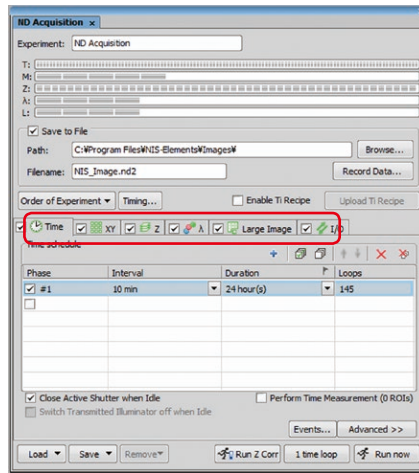
## Multidimensional imaging

\* Available dimensions vary depending on the package.

### ND Acquisition

NIS-Elements captures images in a combination of multiple dimensions such as Time-Lapse, Multichannel, Z-series, and Multipoint. It is also possible to create and manage the acquisition of a multi-dimensional dataset with a thirty-minute time lapse of two wavelengths and a Z series across each well of a multi-well plate.

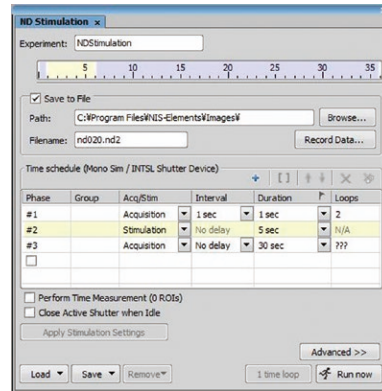
Option ( )



### ND Stimulation

NIS-Elements controls photo stimulation and image acquisition.

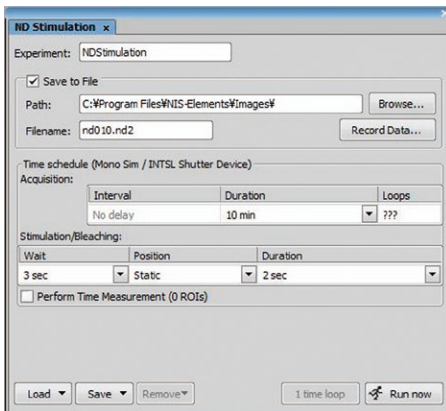
Option ( )



### ND Simultaneous Stimulation

NIS-Elements enables image acquisition during photo stimulation.

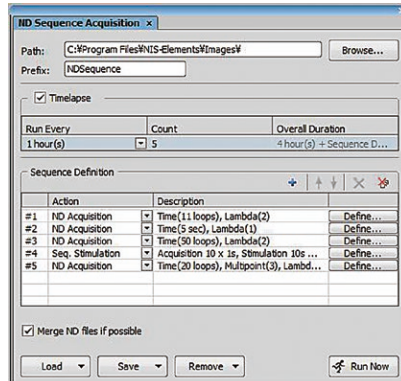
Option ( )



### ND Sequential Acquisition

NIS-Elements allows various sequential imaging experiments to be combined with other functions, such as simultaneous photo stimulation and imaging, or multidimensional acquisition.

Option ( )



## Optical Configuration

Ar Br D

Presets or 'Optical Configurations' can be saved for each observation method such as FITC fluorescence and DIC imaging, memorizing the settings of the microscope, camera and peripheral devices. The optical configurations are created through a one click set up and are displayed as icons in the tool bar for easy access and use.

Camera setting

Microscope Setting

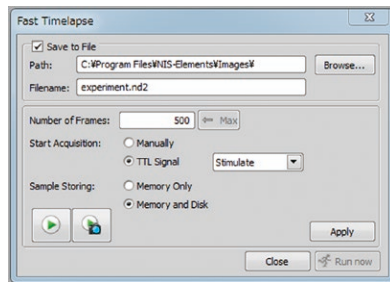
Memorize settings of the camera and microscope

## Movie Capture, Fast Image Capture

NIS-Elements has several options to observe and capture a sample's change and fast movement.

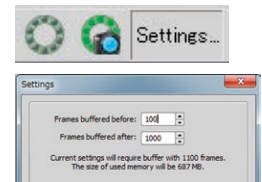
### Fast Time Lapse

Fast Time Lapse is designed for ultra high-speed cameras. The hard disk drive can be used together with PC memory to enable a longer acquisition time.



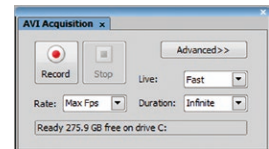
### RAM Capture

RAM Capture allows for acquisition at the fastest possible rate of the camera. A RAM buffer is utilized to enable capture and retrieve a high speed time lapse, which aids in the capture of fleeting events such as calcium sparks, motility and translocation.



### AVI Live-Stream Capture

AVI Acquisition automatically captures live data into an easily exportable and viewable AVI format.



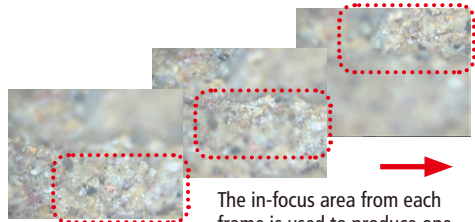
## Extended Depth of Focus (EDF)

Option (Ar Br D)

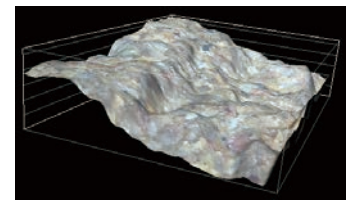


### With motorized focusing

The EDF function selects the in-focus area from multiple Z-stack images, and produces one all-in-focus image. The composite image can be viewed and rotated as a virtual 3D image, as it contains Z-axis information.

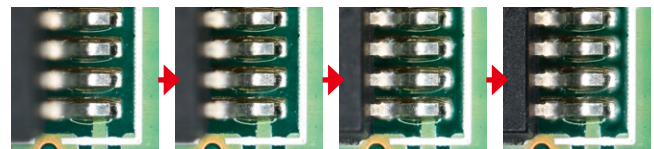


The in-focus area from each frame is used to produce one all-in-focus image.



### With manual focusing

An all-in-focus image is created in real-time in synchronization with the rotation of the focus knob. While the focus is manually adjusted, the in-focus areas of the image at different depths are successively captured and combined for the EDF image.



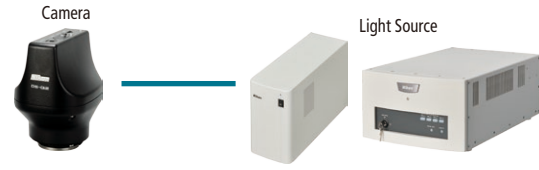
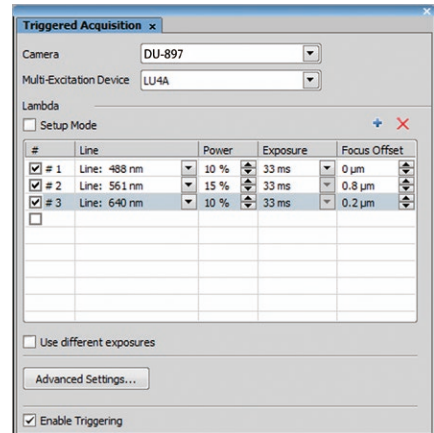


## High Speed Device Operation by Triggering

\*Some cameras and devices are not compatible with these functions. For more information, please contact Nikon or an authorized representative.

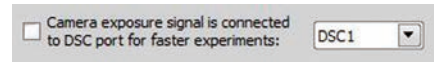
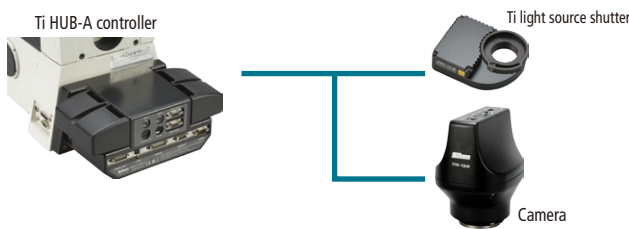
### Triggered Acquisition

Triggering external devices directly from the camera enables synchronized control of various devices such as the laser unit without passing through the PC. This allows for the fastest performance of the system components for multi-wavelength excitation in TIRF observation.



### Ti-recipe

This function enables the HUB-A controller of the motorized inverted microscope Ti-E to control both image acquisition and the fluorescent shutter by directly connecting the camera and a HUB-A controller without passing through a PC. As a result of optimizing the communication times of all connected devices, acquisition times for multi-dimensional datasets are reduced.

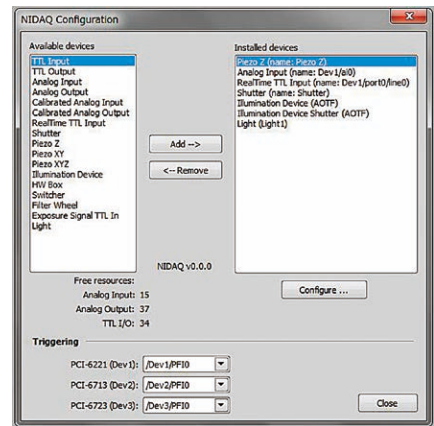


Ti-recipe setting window

### NI-DAQ Control

TTL and analog signal input/output with NI-DAQ Control enables experiments using various triggerable devices. Device triggering minimizes imaging time lag when used to control a Piezo Z device, shutter and wavelength switching, as it performs at the faster rate of the device without software communication delay. The calibration of analog signal output from devices to such as temperature enables data to be measured and observed during experiments.

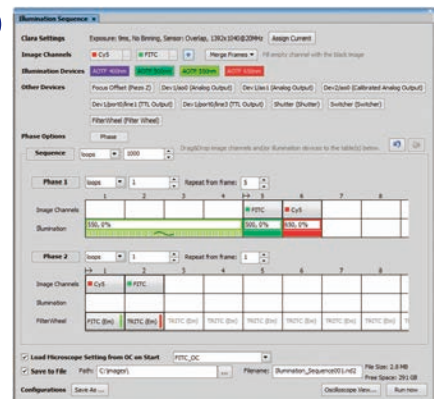
Option ( Ar Br D )



### Illumination Sequence Option

This module provides an easy-to-use graphical user interface for setting and running advanced real-time (triggered) acquisition experiments. It is a universal interface for camera-to-device triggering. An item drag-drop function makes it easy to create any complex illumination or stimulation procedure in a matter of minutes.

Option ( Ar )



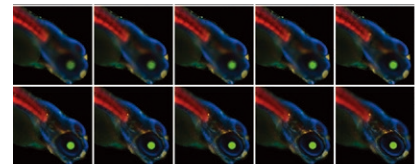
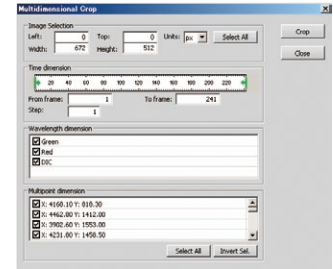
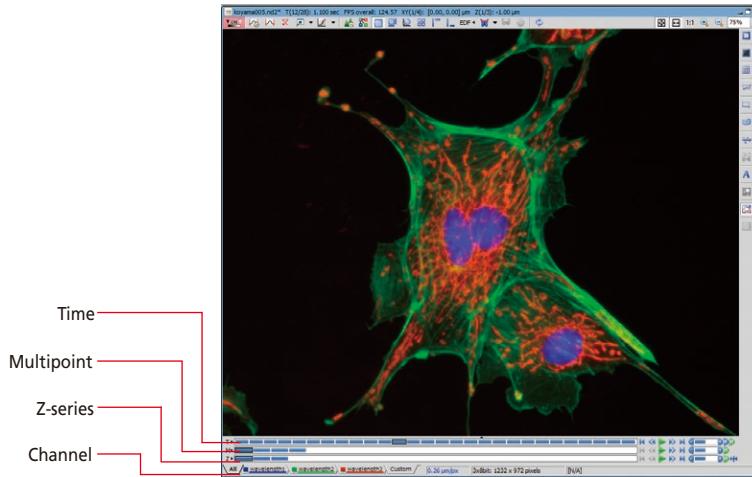
# Display and Data Processing

Various methods are available for displaying and processing captured images and datasets.

## Multi-dimensional Image Display

Ar Br

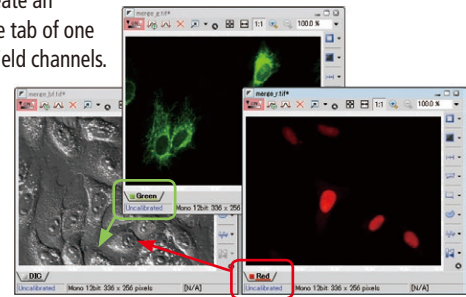
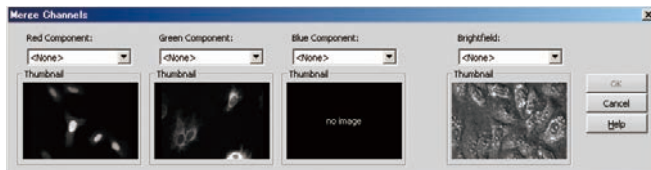
NIS-Elements displays time lapse, multi-channel, multiple X, Y, Z positions in an intuitive layout, which allows for automatic playback and the ability to select subsections of the data to be saved as a new file.



## Merge Channels

Ar Br D

Multiple single channel images (ex., two from three-channel acquisition images) can be merged together to create an overlay of full depth separately scalable images. With AR and BR, images can be merged by simply dragging the tab of one image onto another image. With D, images are merged by selecting each image for red, blue, green and brightfield channels.



## Image Processing

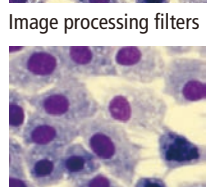
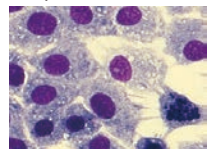
### Image Filtering, Color Adjustment

Ar Br D

\*Usable functions vary depending on the package.

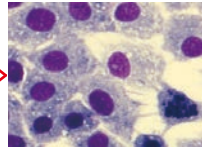
With NIS-Elements image processing tools, it is possible to modify image display and feature extraction using various filters for, for example, sharpness, smoothing and detection. White balance and RGB/HIS balance adjustment are additional available options.

Sharpness

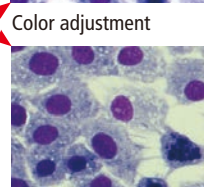
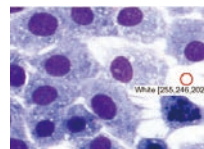


Smoothing

Original image



White balance

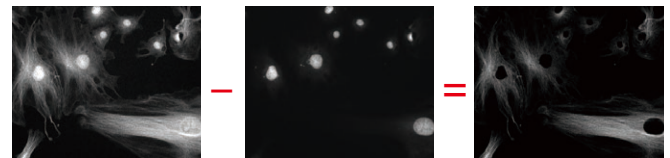


RGB balance adjustment

### Arithmetic operation (Image arithmetic)

Ar Br Option ( D )

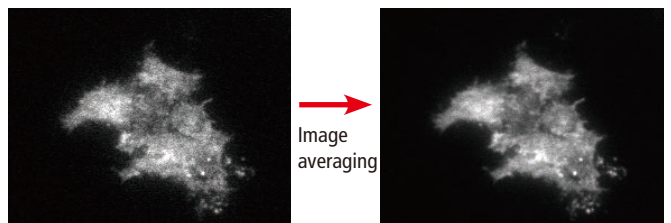
NIS-Elements enables arithmetic operations such as addition, subtraction, multiplication and division on an image or between multiple images. Arithmetic operation between multiple images is also possible.



### Arithmetic operation (Image averaging)

Ar

NIS-Elements reduces the noise of an image by averaging multiple sequential images such as time-lapse images. Rolling averaging that does not reduce frame rate is available as well.

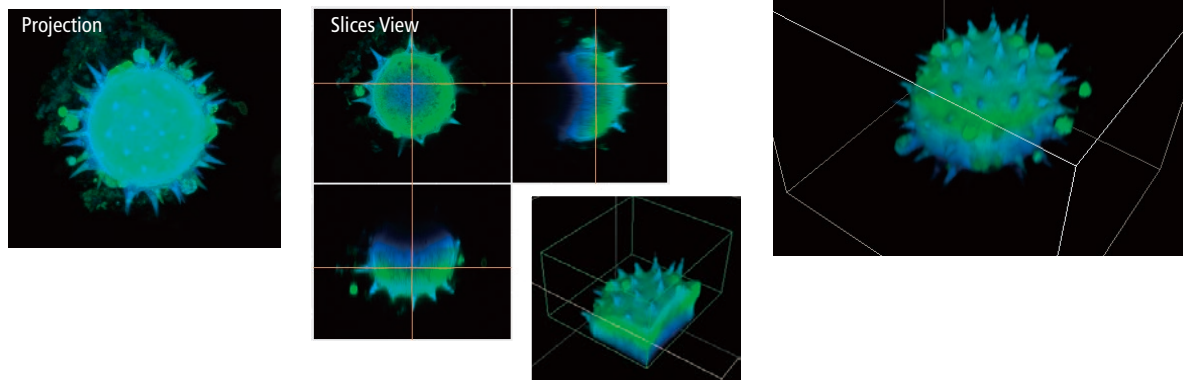




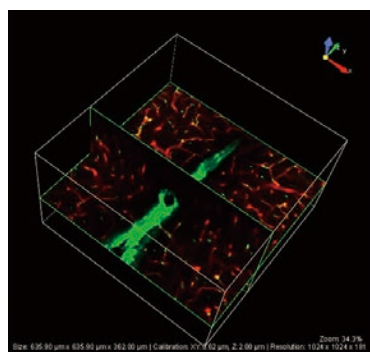
## Z-Series Image Display (Volume View)

\* Volume view and slice view are only possible with AR and BR. Ar Br D

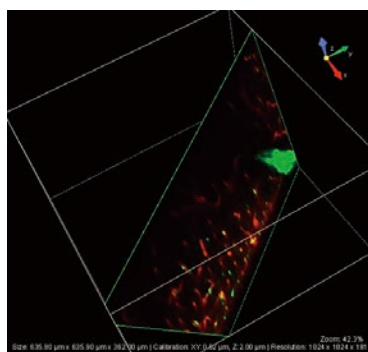
Z-series images can be displayed in various formats such as max. and min. projections, X-Z axis and Y-Z axis cross-sectional slice view and 3D volume view. Rotatable 3D volume rendered views from 3D datasets are easily converted to an AVI or MOV format for file sharing and export.



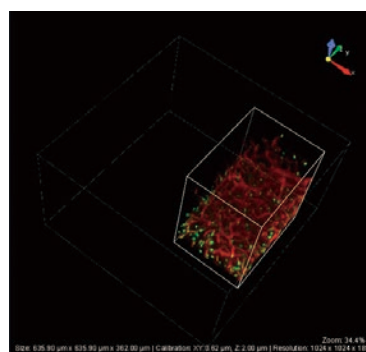
A combination of an AR package and a graphic board that supports DirectX 10 or later enables higher and more complex image display than ever.



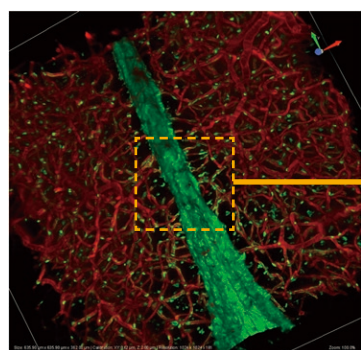
Cut Plane XY+YZ



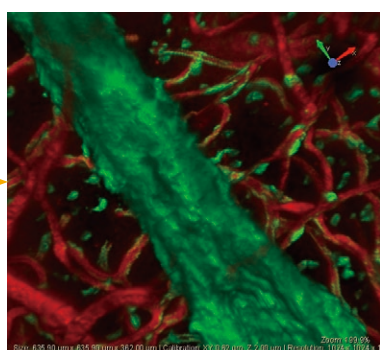
Cut Plane Any



Crop



High Resolution Display Mode



Mouse Brain  
Sample mounted in RapiClear 1.47 (SunJin Lab Co., Taiwan) to render the tissue optically clear.

## Deconvolution

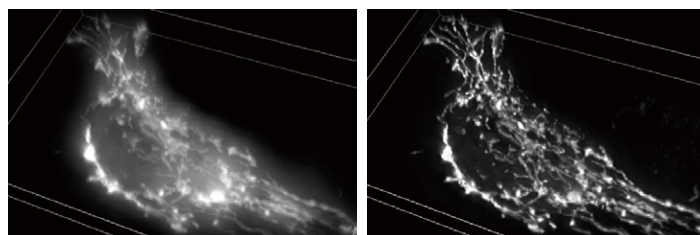
Option ( Ar )

### 3D Deconvolution

Haze and blur of the acquired fluorescence image can be eliminated. By reassigning out-of-focus intensities back to the spatial locations to where they originated, the intensity of the image is kept and allows for quantitative analysis. Algorithms for wide-field fluorescence, point-scanning confocal and spinning-disk confocal images are available.

### 2D Deconvolution

The 2D deconvolution module can be applied to a live image or an already acquired dataset. The module also allows the elimination of out-of-focus blur from live images and multidimensional images.



Before deconvolution

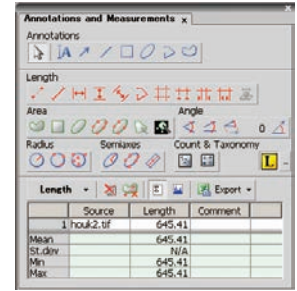
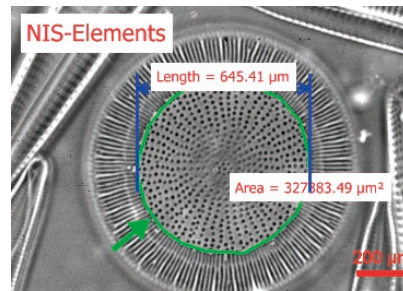
After deconvolution

# Measurement and Analysis

## Manual Measurement (Interactive Measurement) and Image Annotation

Ar Br D

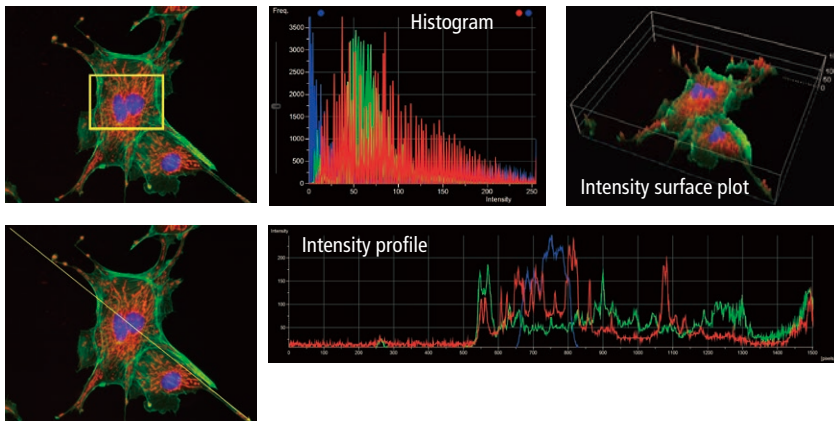
Interactive Measurement allows easy measurement of length and area by drawing lines or an object directly on the image. The results can be attached to the image, and also exported as text or to an Excel spreadsheet. Annotations such as arrows, circles, squares, text are also available display options.



## Histogram/Intensity Line Profile/Intensity Surface Plot

Ar Br D

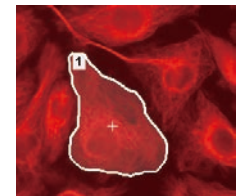
Histogram measurement measures the intensity distribution of pixels across the whole image or a defined region. An intensity line profile measurement shows the intensity distribution on a defined line. The Intensity Surface plot shows the intensity distribution of an image with the height of the z-axis line.



## ROI Statistics

Ar Br

\*Usable functions vary depending on the package. Common pixel measurements such as area, maximum or minimum intensity are possible with the user defined ROI (Region Of Interest). ROI or multiple ROIs statistic results for a single image or a multi-dimensional dataset are displayed and easily exported as text or an excel file.



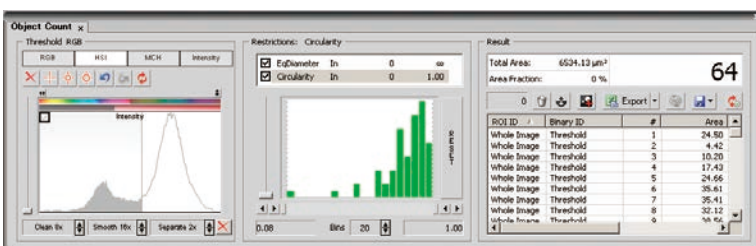
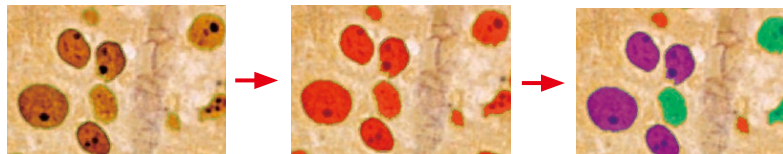
Feature	ROI	Binary
Area [μm <sup>2</sup> ]	1593.56	0
Mean Intensity	120.54	0
Min Intensity	63.00	0
Max Intensity	206.00	0
Sum Intensity	5287736.00	0
StDev Intensity	28.36	0
Signal/Background	3.14 : 1	0

Area Fraction: N/A Selected ROIs: 1/1

## Auto Measurement (Object Counting)

Ar Br Option ( D )

Auto measurement measures the number or area of objects which are extracted from images by the creation of a binary layer through thresholding using RGB/HIS or intensity values. The results can be listed or exported as text or an excel file. It is possible to save and reuse thresholding parameters.

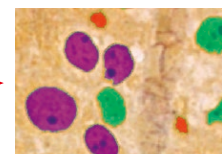


## Classifier

### Object Classifier

Option ( Ar )

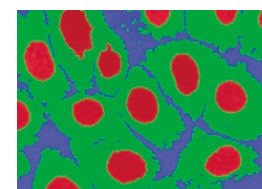
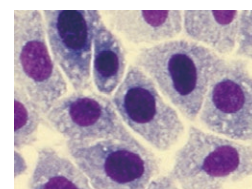
Object classifier uses objects identified by thresholding along with additional features such as shape factors, and other statistical methods including nearest neighbor and neural networks for classifying objects into multiple categories. It is also possible to teach the module based on interactive 'picking' of image pixels.



### Pixel Classifier

Ar Br Option ( D )

This function classifies each pixel in the image with RGB/HIS and intensity across the whole image. Results are reported in percentage and it possible to save and reuse parameters across a large sample of images. Multiple binary layers are also displayed with multiple colors on the image and are available with other analysis tools within the software package.

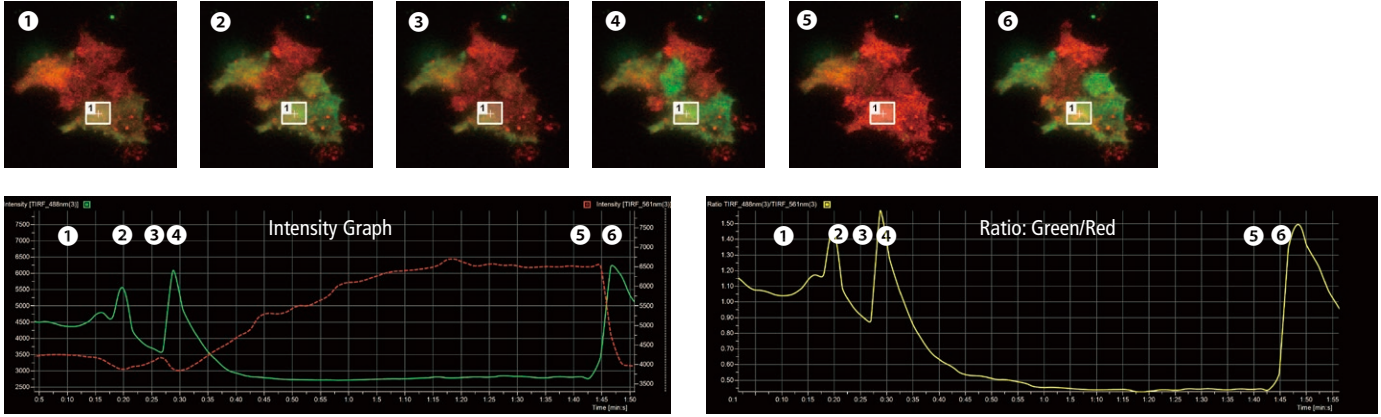




## Time (Intensity) Measurement

Option (Ar) (Br)

Time measurement creates a graph of sequential intensity changes while time-lapse imaging or from captured time-lapse images. Ratio view function\* allows the measurement of the ratio of two wavelengths across multiple ROIs and shows the ratio value by pixel. Numeric data and graph images are exportable and the measurements on the graph are available as well. (\* Only with AR)

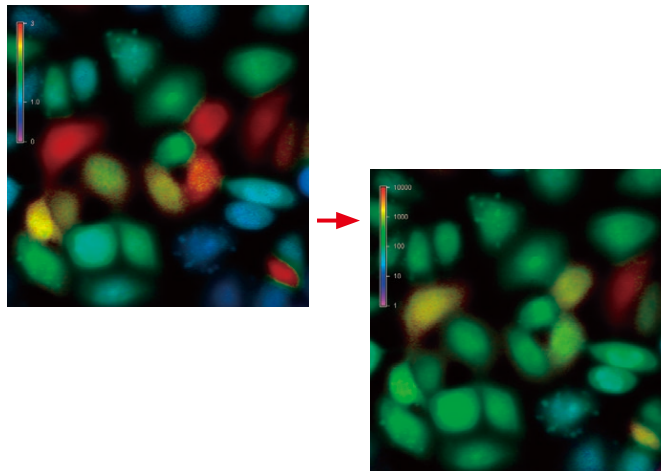


## Calcium & FRET

Option (Ar)

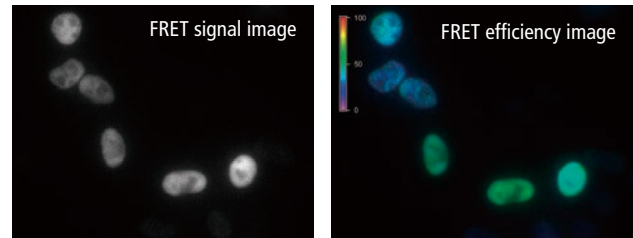
Ca<sup>2+</sup> ion concentration calibration of the ratiometric fluorochrome Fura2, for example, is available using an easily configurable wizard. Corrected FRET image and FRET efficiency, reported in percentage is also available using three filter sets (three types of excitation–fluorescent combination: “Donor – Donor,” “Acceptor – Acceptor” and “Donor – Acceptor”) and two bleed-through factors.

Ca<sup>2+</sup> ion concentration calibration from ratiometric value



FRET analysis

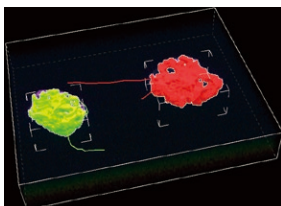
The 'Create FRET Image' dialog box is shown. It includes fields for Donor-acceptor (Da), Donor-donor (Dd), Acceptor-acceptor (Aa), and Acceptor-donor (Ad) filter sets. There are thumbnail previews for each. The 'FRET Method' is set to 'Sensitized emission'. Below, there are input fields for 'Acceptor in FRET (CoA)' (0.19), 'Donor in Acceptor', 'Donor in FRET (CoB)' (0.55), and 'Acceptor in Donor'. Buttons for 'Calibrate...', 'OK', 'Load', 'Cancel', 'Save', 'Help', and 'Remove' are present.



## 2D/3D Object Tracking

Option (Ar)

Tracking of an object utilizes the threshold of objects over time and produces measurements such as velocity, acceleration, and distance from a specified origin. The tracking module offers both automated tracking and manual tracking methods.



Index	Time [s]	Position X [µm]	Position Y [µm]	Position Z [µm]	Distance [µm]	Velocity [µm/s]	Acceleration [µm/s <sup>2</sup> ]	Path Length [µm]
1	0.000000	32.880999	25.647456	0.000000	0.000000	N/A	N/A	0.000000
2	60.000000	33.054105	25.596928	0.000000	0.039940	0.001402	N/A	0.039940
3	120.000000	32.238145	25.628410	0.000000	0.176788	0.002946	0.000024	0.265728
4	180.000000	32.343192	25.688651	0.000000	0.179005	0.002751	-0.000013	0.394762
5	240.000000	32.578441	25.748673	0.000000	0.242785	0.004046	0.000022	0.627848
6	300.000000	32.593850	25.772291	0.000000	0.030295	0.000504	-0.000059	0.667813
7	360.000000	33.688604	25.827062	0.000000	0.109126	0.001819	0.000022	0.776939
8	420.000000	32.793225	25.789797	0.000000	0.115727	0.001945	0.000002	0.892666
9	480.000000	32.917277	25.792598	0.000000	0.127637	0.002127	0.000003	1.021193
10	540.000000	33.971434	25.746410	0.000000	0.068367	0.001089	-0.000017	1.088660
11	600.000000	33.983979	25.602417	0.000000	0.144538	0.002409	0.000022	1.231198
12	660.000000	34.180742	25.644192	0.000000	0.214884	0.003580	0.000000	1.446003
13	720.000000	34.403611	25.577152	0.000000	0.221535	0.003692	0.000002	1.667538
14	780.000000	34.571361	25.500659	0.000000	0.138235	0.002264	-0.000024	1.802773
15	840.000000	34.692465	25.616591	0.000000	0.211348	0.003571	0.000001	2.014021
16	900.000000	34.755459	25.641291	0.000000	0.066137	0.001102	-0.000040	2.080159

Graph \Data / Path Length: 28.362714 [µm] Avg Velocity: 0.001818 [µm/s] Avg Acceleration: 0.000000 [µm/s<sup>2</sup>]

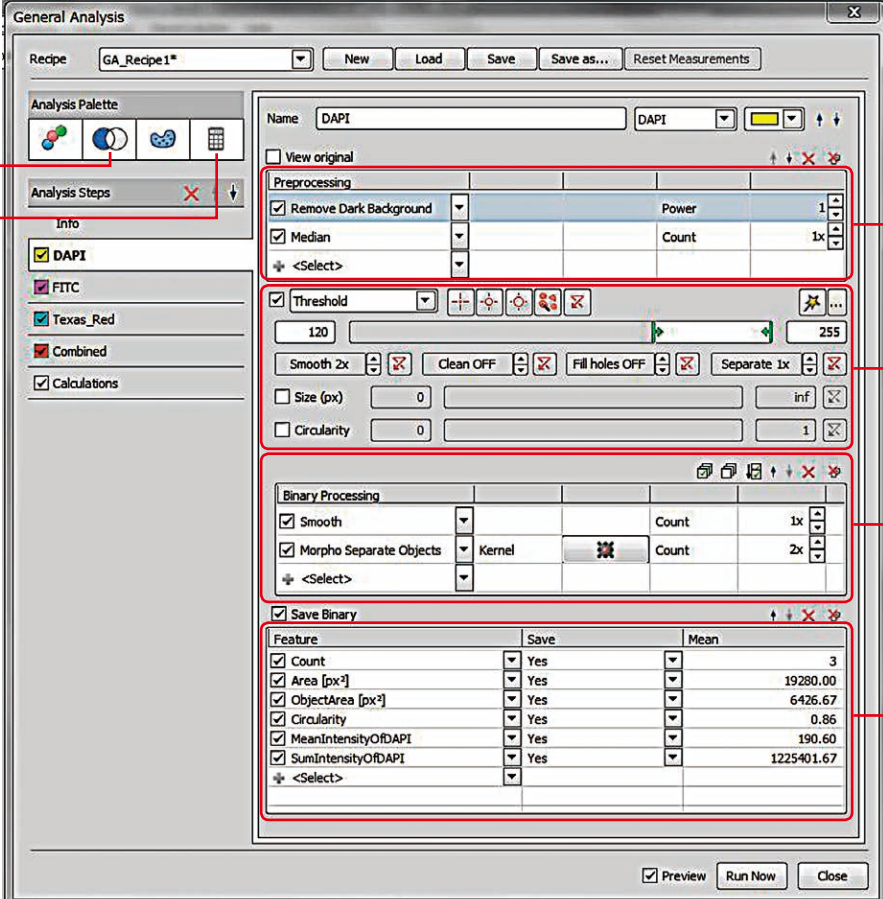


# GA (General Analysis)

Option (  )

General Analysis streamlines the setup of image analysis combining functions, such as image preprocessing and thresholding, processing of binary images and features, and measurement settings.

- GA creates a new measurement area by combining multiple binary layers, and creates a new measurement parameter by applying these custom measurement settings.
- Each setting can be stored as a recipe that can be rerun for routine analysis under the same conditions across multiple datasets.

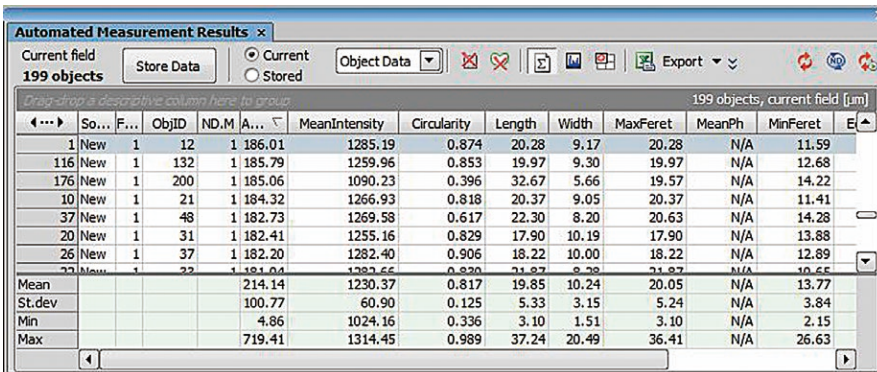


The screenshot shows the 'General Analysis' window with the following components highlighted:

- Combine binary layers**: Points to the 'Analysis Palette' icons.
- Create new measurement lists**: Points to the 'Analysis Steps' dropdown.
- Setup of multiple analysis tasks**: Points to the top section of the main panel.
- Image preprocessing**: Points to the 'Preprocessing' section, including 'Remove Dark Background' and 'Median'.
- Image thresholding**: Points to the 'Threshold' section, including the threshold value (120) and 'Smooth 2x'.
- Processing of binary layers (measurement areas)**: Points to the 'Binary Processing' section, including 'Smooth' and 'Morpho Separate Objects'.
- Measurement parameters**: Points to the 'Save Binary' table, which lists features like 'Count', 'Area [px²]', and 'Circularity'.

## Output of analyzed results

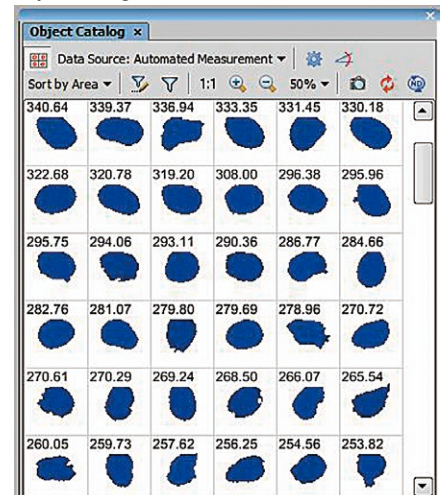
Automated Measurement results



The 'Automated Measurement Results' window displays a table with 199 objects. The columns include: So..., F..., ObjID, ND.M, A..., MeanIntensity, Circularity, Length, Width, MaxFerret, MeanPh, and MinFerret. Summary statistics are provided at the bottom:

Statistic	MeanIntensity	Circularity	Length	Width	MaxFerret	MeanPh	MinFerret
Mean	1230.37	0.817	19.85	10.24	20.05	N/A	13.77
St.dev	100.77	0.125	5.33	3.15	5.24	N/A	3.84
Min	4.86	0.336	3.10	1.51	3.10	N/A	2.15
Max	719.41	0.989	37.24	20.49	36.41	N/A	26.63

Object catalog

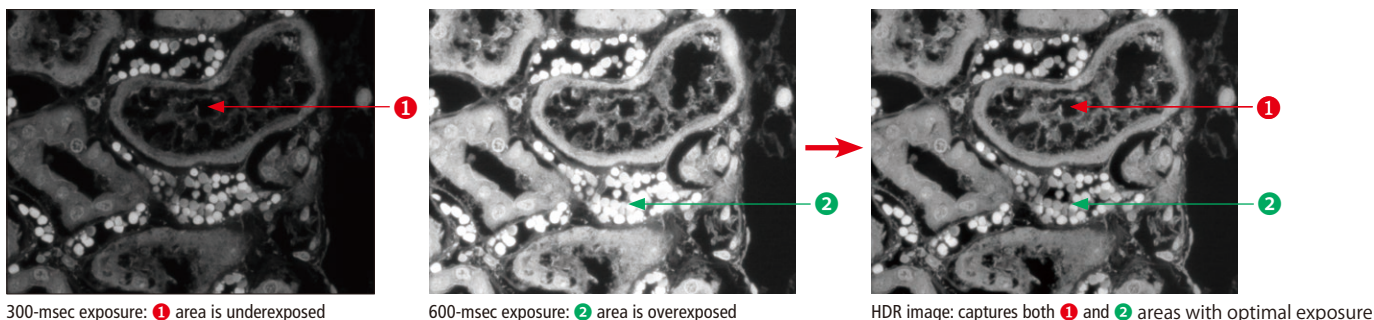


# Others

## HDR (High Dynamic Range) Image Acquisition

**Ar Option ( Br D )**

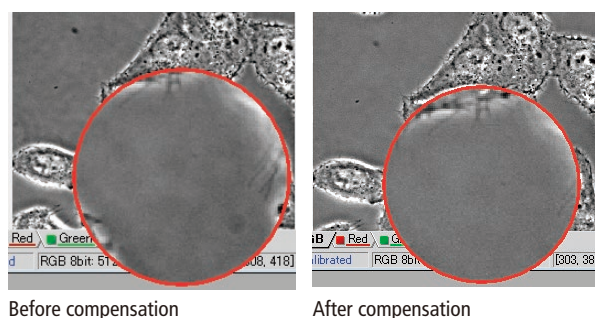
HDR creates an image with appropriate brightness in both the dark and bright regions in a sample by combining multiple images acquired with different exposure settings. It is also possible to create HDR image using multiple captured images.



## Background Compensation

**Ar Br D**

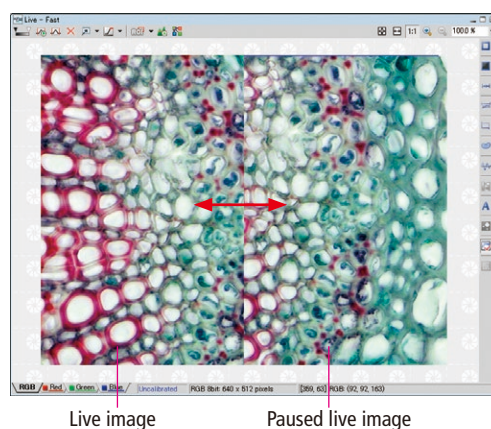
Background correction uses previously captured images to correct uneven background brightness while imaging or of captured images.



## Live Image Comparison

**Ar Option ( Br D )**

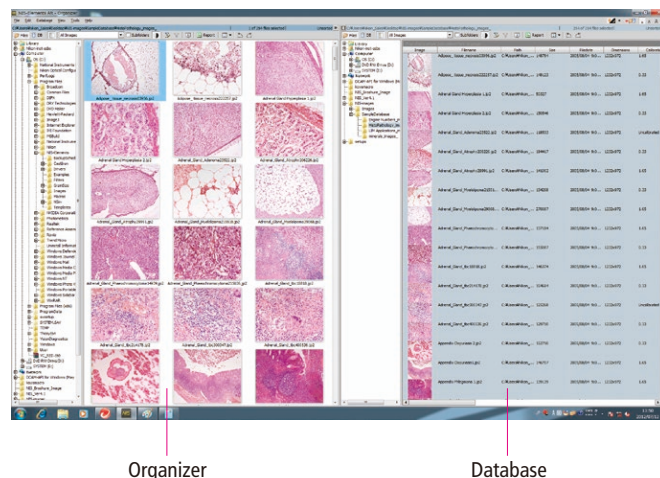
Live Compare enables easy image comparison between a sample image and a live image. Live observation side by side with a paused live image is also available in split screen mode.



## Database

**Option ( Ar Br D )**

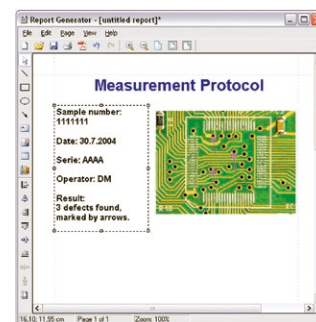
Using the organizer function, captured images are displayed in thumbnails for easy retrieval of the desired image. By simply clicking on the thumbnail image in this view, the image is easily opened. Sorting and filtering this database of images and datasets using acquisition details such as objective settings, date and author is an easy method for data management as well.



## Report Generation

**Ar Br D**

Images captured with NIS-Elements have information such as acquisition details and analysis results, allowing export and PDF conversion of the image and the associated image header and data information.



## User Rights/Control

**Ar Br D**

For safe system management, it is possible to individually limit each user authorization using the user account of Windows® (such as the Administrator or Guest) or the user account of NIS-Elements. It limits the authorization and modification of the device settings (microscopes, cameras or others), optical configuration and layout editing.





# High-Content Acquisition and Analysis

## HC Template for the High Content Analysis System

Option (  )



The HC Template is a dedicated software module within NIS-Elements.

- It allows fully automated acquisition and analysis of a large number of high-content, multi-dimensional images with integrated control of the high-speed motorized focus and stage of Ti-E motorized inverted microscope, camera and peripheral devices.
- HC Template within NIS-Elements allows for quick experimental setups with several autofocusing options and an immediate view of measurement data well by well during acquisition and via a heat map for trend observation and further analysis.



## High Content Analysis System

- The microscope-based High Content Analysis System combined with the Ti-E offers a wide range of interchangeable options, including a full range of camera models, such as high-speed and high-definition cameras, as well as a choice of magnifications and fluorescence filters.
- High-speed peripheral devices are optionally available to boost throughput of integrated devices. These include the high-speed piezo Z-objective positioner for fast autofocusing and the automatic plate loader for auto analysis of multiple well plates.

### High Content Analysis System

Microscope	Motorized inverted microscope ECLIPSE Ti-E
Compatible well plate types	6-, 12-, 24-, 48-, 96-well plates, 384-well plate (for fluorescence observation)
Multiple FOV experiments	Center, Covering, Random, Random+Center and Regular pattern in each well
Illumination methods	Fluorescence, Phase contrast, DIC
Image acquisition	Multichannel, Time lapse, Multidimensional imaging
Acquisition speed	2 min/96 well plate (1 point/well, 30 msec/shot, without Z stacking, PFS (Perfect Focus System))
Data visualization	Plate view, Sample labeling, Heat map, Graphing
Recommended objectives	S Fluor 4x, Plan Fluor 10x, S Plan Fluor ELWD 20x/C/40xC (phase contrast objectives can also be used for image acquisition)
Recommended imaging devices	Camera : DS-Qi2 (Nikon), Zyla sCMOS (Andor technology), iXon3 DU-897 (Andor technology) Confocal microscope : A1+, A1R+, C2+ (Nikon)

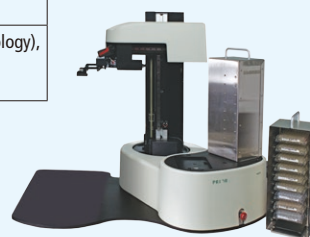


### High-speed Piezo Z-objective Positioner (Option)

For fast autofocusing

Z travel range	Up to 200 $\mu$ m
Z travel speed	30 msec
Repeatability	$\pm$ 5 nm

(Physik Instrumente (PI) GmbH & Co. KG)



### Automatic Plate Loader (Option)

For automatic imaging with multiple well plates

Number of well plates	Up to 20 plates
Loading speed	30 sec/plate
Barcode reader option	1D and 2D barcode

(Prior Scientific Instruments Ltd.)





Visual programming tool that enables creation of highly flexible experimental templates

## JOBS Editor

Option (Ar)

JOBS Editor is a visual programming tool that can create experimental templates (JOBS) simply by dragging and dropping the settings for "tasks" in the sequence of experimental procedures, such as sample definition, image acquisition settings and analysis settings, into the JOBS Editor window.

The HC Template offers streamlined operation of high-throughput imaging/analysis. However, JOBS Editor enables easy creation of more complex and custom experimental templates, from image acquisition to analysis, by providing a number of available tasks, without the need of advanced data programming knowledge and the need for creating a macro.

**Well Plates**

- Define Plate
- Select Wells
- Loop over Wells
- Manual Plate List
- Loop over Plates
- Move to Well Center

**Autofocus + Focus Surface**

- Autofocus Settings
- Autofocus
- Move to Focus Surface

**PFS**

- PFS On and Focus
- PFS Off

**Time Series**

- Time Lapse
- Time Sequence

**Stage XY Points**

- Generate Points
- Predefined Points
- Loop over Points
- Export Point Set to ND
- Import Point Set from ND

**Z-Stack**

- Define Z-Stack
- Z-Stack Loop
- Assign Z-Stack to Point/Well

**Acquisition**

- Capture Definition
- Capture

**Analysis**

- Cell Count Analysis
- Intensity Analysis

The screenshot shows the 'Job Definition - Well Plate: Create Focus Surface' window. It features a task palette on the left and a main workspace on the right. The workspace contains a sequence of tasks: 'use Plate with 96 wells', 'WellSelection: select wells in Plate.Wellplate (35 wells selected)', 'AFSettings: setup autofocus', a 'WellLoop' block containing 'Move to center of WellLoop.CurrentWell', 'Autofocus: do autofocus with settings AFSettings.Settings', and 'assign current Z to WellLoop.CurrentWell.Position.z', 'new ManualSlideList of none', a 'Slides' block with 'Move to center of none', 'Question', and 'FocusSurface: create focus surface on WellSelection.Selection'.

Main tasks

Task definition

For offline analysis of high-content data

## Remote Database/JOBS Viewer\* (for HC Template and JOBS Editor)

Option (Ar)

Enables image analysis and management of a large volume of high-content imaging data on an offline PC.

Operating image acquisition and data analysis on separate computers boost total throughput.

General Analysis module is required for offline image analysis.

\*JOBS Viewer is not available in some regions.

- Remote Database allows offline exchange of data between computers and network servers.
- Using JOBS Viewer and/or General Analysis, images acquired through HC Template or JOBS can be analyzed on a dedicated offline computer.

Data upload/download using Remote Database

The 'UPLOAD' dialog shows a list of projects and their contents. The 'Project' column is expanded to show items like 'Live Cells', 'HCA Fixed with WPL', 'HCA Fixed Samples', 'HCA Live', 'HCA Fixed', 'NewJob1', 'Live Cells1', 'Fixed Samples1', 'PFS\_Surface', 'Well Plate: Create Focus Surface', 'Create PFS Surface', 'WellSelection', and 'HCA Fixed with WPL1'. Below the list is a table for 'Uploading Rules'.

Present in Local	Present in Remote	Action to perform
X Absent	✓ Present	Keep Remote
✓ Present	X Absent	Upload to Remote
! Jobs may not match each other		Keep Remote

Selected 43 runs and 318 images. Images takes 876 MB disk space.

The 'DOWNLOAD' dialog shows the same list of projects and contents as the upload dialog. Below the list is a table for 'Downloading Rules'.

Present in Local	Present in Remote	Action to perform
X Absent	✓ Present	Download to Local
✓ Present	X Absent	Keep Local
! Jobs may not match each other		Keep Local

Selected 43 runs and 318 images. Images takes 876 MB disk space.

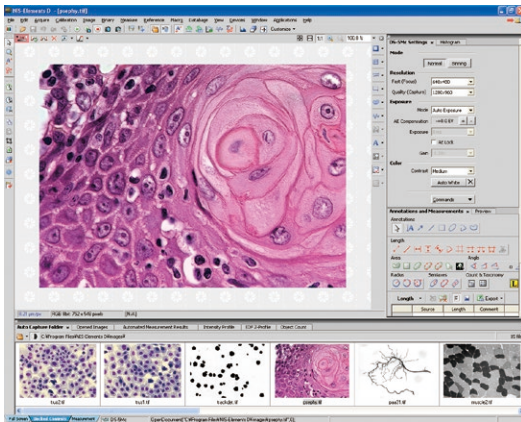


GUI Option

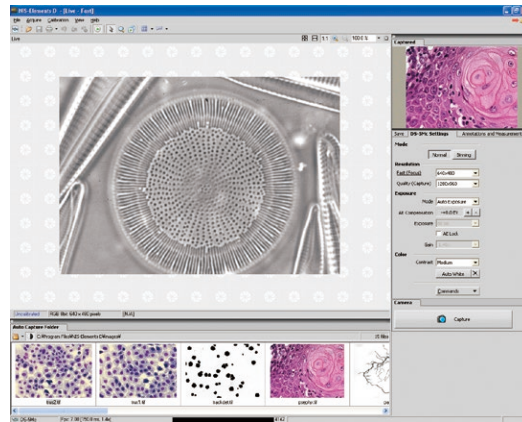
### Industrial Simple GUI

D

With D package, the simple GUI mode provides controls for the most common operations such as image capture and simple measurement.



Standard GUI mode: Displays all functions of D package

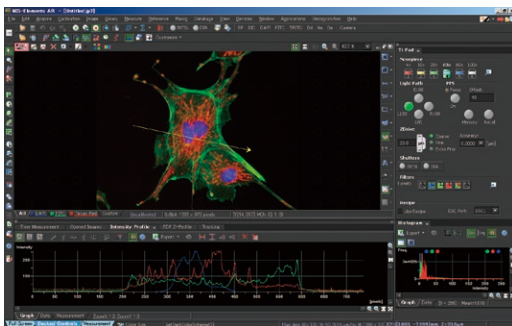


Simple GUI mode: Display only image capturing and measurement

### Dark Color Scheme

Ar Br

This popular display option mode has a brightness level interface color palette suitable for use in a dark microscopy room.



### Layout Manager

Ar Br D

Layout manager enables customizing layouts of controls, toolbars and menus and application (image acquisition or measurement). Saving custom layouts is possible and accessible through one-click tab access.



Off-line Analysis and Viewer Software

NIS-Elements is compatible not only with Nikon products but also with third-party products such as high-sensitivity CCD cameras and peripheral devices. Third party devices and cameras are easy to integrate through the NIS-Elements intuitive install and device manager.

### Off-line Package for Analysis

The NIS-Elements off-line software package offers analysis tools such as intensity measurements and object counting of tiff and multi-dimensional format images captured with Nikon's microscopes and third-party software.

### Viewer Software

This is free software for image display of single images and datasets captured using NIS-Elements. Possible views include Tile View, Max/Min Projections and 3D Volume View. Saving multi-dimensional files into TIFF format is available as well. The viewer is downloadable from the Nikon website.



Software Upgrade

### SUA License

NIS-Elements can be upgraded for one year from the date of purchase. The Software Upgrade Agreement (SUA) License, which is purchasable in one-year license segments, extends the access to the latest version of NIS-Elements.





# Supporting Broad Microscope Imaging

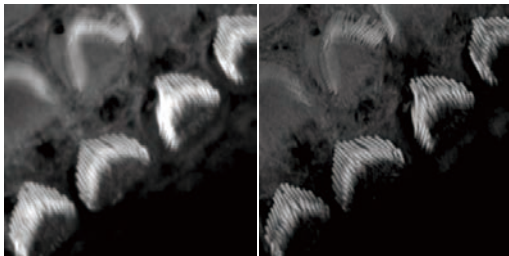
NIS-Elements is a common software platform for Nikon microscope systems, which allows the comprehensive control of wide range of functions for cameras, confocal imaging systems and super resolution microscopes.

## C NIS-Elements C

### ER NIS-Elements C-ER

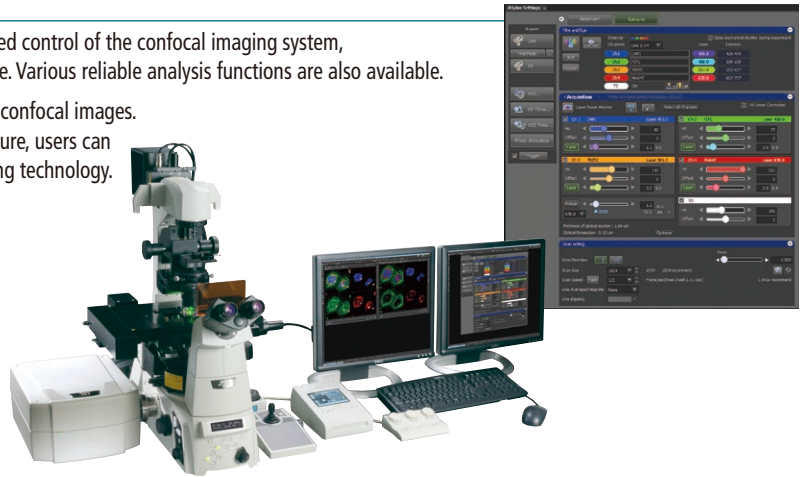
NIS-Elements C/NIS-Elements C-ER imaging software enables integrated control of the confocal imaging system, microscope and peripheral devices with a simple and intuitive interface. Various reliable analysis functions are also available.

NIS-Elements C-ER can provide resolution enhancement capability for confocal images. Without changing the conventional confocal image acquisition procedure, users can easily achieve enhanced resolution by utilizing unique image processing technology.



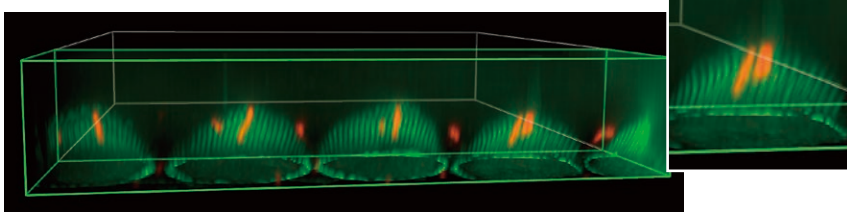
Conventional confocal image      NIS-Elements C-ER image

Apical surfaces of auditory epithelia of mouse cochleae were stained by Atto-565-phalloidin at postnatal day 2. Photos courtesy of: Dr. Hideru Togashi, Division of Molecular and Cellular Biology, Kobe University Graduate School of Medicine.



## N-SIM Analysis option

N-SIM Analysis option allows control of Nikon Super Resolution Microscope N-SIM, which can achieve an image resolution of 115nm (in 3D-SIM mode) and temporal resolution of up to 0.6 sec/frame using high frequency Structured Illumination.

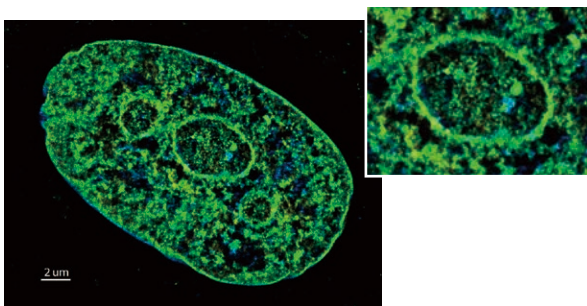


Luminal surface of the organ of Corti at postnatal day 1. (Mouse)  
Green: F-actin, red: acetylated-tubulin  
Photos courtesy of: Drs. Kanoko Kominami, Hideru Togashi, and Yoshimi Takai, Division of Molecular and Cellular Biology, Kobe University Graduate School of Medicine

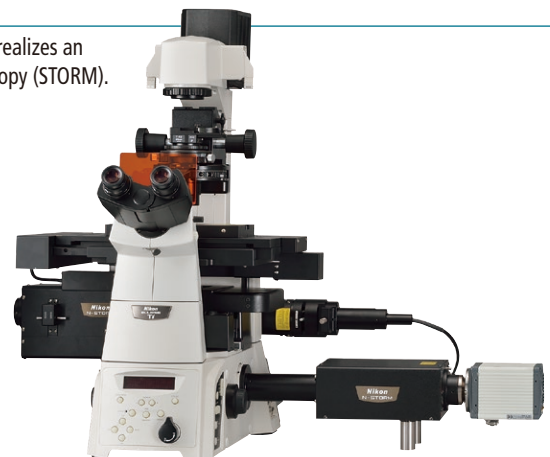


## N-STORM Analysis option

N-STORM Analysis option enables control of Nikon Super Resolution Microscope N-STORM, which realizes an incredible image resolution of approx. 20nm by utilizing STochastic Optical Reconstruction Microscopy (STORM).



A human fibroblast labeled with EdU-Alexa Fluor 647 to visualize DNA with 3D-STORM. Photo courtesy of: Jason Otterstrom, Ph.D., Melike Lakadamyali, Ph.D., The Institute of Photonic Sciences (ICFO), Castelldefels



## NIS-Elements Supported Devices (ver. 4.50 or later)

### Nikon Cameras

DS-Ri2  
 DS-Qi2  
 CCU: DS-U2/L2 (for camera head DS-2Mv/Vi1/  
 2MBW/2MBWc/5M/5Mc/Fi1/Fi1c/Qi1/Ri1)  
 CCU: DS-U3/L3 (for camera head DS-Vi1/Fi1/Fi1c/  
 Qi1/Ri1/Fi2)  
 DQC-FS<sup>2</sup>

### Third-party Cameras

#### Photometrics

Evolve  
 QuantEM  
 CoolSNAP HQ2  
 CoolSNAP ES<sup>2</sup>  
 Cascade 128+<sup>2</sup>  
 Cascade II 512<sup>2</sup>  
 Cascade 1K<sup>2</sup>

#### Andor Technology

Luca S, Luca R  
 iXon+ 897, 888, 885  
 iXon X3  
 iXon Ultra  
 iKon-M  
 Clara  
 Neo sCMOS  
 Neo 5.5 sCMOS  
 Zyla 5.5 sCMOS (3-Tap, 10-Tap)  
 Zyla 4.2 sCMOS

#### QImaging

Retiga EXi Aqua/Blue  
 Retiga 2000R - Mono/Color  
 Retiga SRV + RGB-HM-S Slide  
 Rolera EMC2  
 QIClick  
 QICAM

#### Hamamatsu

ImagEM  
 ImagEM 1K  
 ImagEM X2  
 ORCA-R2  
 ORCA-Flash2.8  
 ORCA-Flash4.0  
 ORCA-Flash4.0 LT  
 ORCA-D2  
 ORCA  
 C9100-02, C9100-12

#### PCO

pco.edge 3.1 (Only compatible with mono sensor)  
 pco.edge 4.2 LT  
 pco.edge 4.2  
 pco.edge 5.5 (Only compatible with mono sensor)

#### Imaging Source

DFK/DMK 31,41,51,72 series  
 DFK/DMK 23U274  
 DFK/DMK 23UP031  
 DMK 23UM021  
 DFK 23U445

#### Others

TWAIN Device<sup>2</sup>

### Nikon Microscope Devices

Biological Microscope Ti (HUBC/A, HUBC/A-U, Ti-LAPP System<sup>4</sup>)  
 Biological Microscope TE2000 (Perfect Focus System)  
 Biological Microscope 90i (ND filter, Stage, DIH-E/M)  
 Biological Microscope 80i (DIH-E/M, D-FL-E, C-Box/C-Box2)  
 Biological Microscopes Ni-E, Ni-U, Ci-E  
 Fixed-stage Microscope FN1 + D-DH-E-A1<sup>1</sup>  
 Stereo Microscope SMZ25/18/1270i/1270/800N  
 Multizoom Microscope AZ100M  
 Industrial Microscope LV-N Series<sup>3</sup>  
 Measuring Microscope MM-400/800<sup>2</sup>  
 Metallographic Microscope MA200  
 Inspection Microscopes L200N/L300N  
 C-HGFIE HG Fiber Illuminator Intensilight  
 C-LEDFl Epi-Fl LED Illuminator  
 Laser Module LU-N Series  
 LV-NCNT-N Nosepiece controller  
 NI-SH-CON

### Third-party Devices

#### Prior Scientific

ProScan III  
 ProScan II  
 Prior PCI II  
 OptiScan II ES10  
 NZ100,200,400 NanoStageZ  
 ES10ZE

#### Ludl Electronic Products

MAC5000, MAC6000

#### Märzhäuser Wetzlar

TANGO Desktop, Tango PCI  
 LSTEP

#### Vincent Associates (Uniblitz)

VCM-D1

#### Sutter Instrument

Lambda 10-2, 10-3, SC, 10-B, XL

#### Physical Instrument

PI E-662, 665 (RS232)  
 PI E-545+P-545.2R7  
 PI E-545+P-545.3R7

#### Photometrics

Dual View

#### ASI (Applied Scientific Instrumentation)

MS-2000  
 FW-1000  
 SC-2000

#### National Instruments

TTL Input/Output (NI Card)

#### Tokai Hit

WSKM

#### OKO-Lab

H301-T-UNIT-BL-PLUS + CO2-02-UNIT-BL  
 UNO-COMBINED-CONTROLLER

#### Mad City Labs

Nano-Drive

#### Yokogawa

CSU-W1<sup>4</sup>  
 CSU-X1<sup>4</sup>

\*1 Only compatible with 64-bit version OS

\*2 Not compatible with 64 bit version OS

\*3 Not compatible with LV-DAF Auto Focus Unit

\*4 Only compatible with NIS-Elements AR

## Supported Operation System

Windows 7 Professional SP1 (32/64-bit version)

\* NIS-Elements Ar and C are only compatible with the 64-bit version.

NIS-Elements is compatible with all common file formats, such as JP2, JPG, TIFF, BMP, GIF, PNG, ND2, JFF, JTF, AVI, ICS/IDS. ND2 is a special format for NIS-Elements. ND2 allows storing sequences of images acquired during nD experiments. It contains information about the hardware settings and the experiment conditions and settings.

Specifications and equipment are subject to change without any notice or obligation on the part of the manufacturer. April 2017 ©2006-17 NIKON CORPORATION



**WARNING**

TO ENSURE CORRECT USAGE, READ THE CORRESPONDING MANUALS CAREFULLY BEFORE USING YOUR EQUIPMENT.

N.B. Export of the products\* in this catalog is controlled under the Japanese Foreign Exchange and Foreign Trade Law. Appropriate export procedure shall be required in case of export from Japan.  
\*Products: Hardware and its technical information (including software)  
Monitor images are simulated.  
Company names and product names appearing in this brochure are their registered trademarks or trademarks.



**NIKON CORPORATION**

Shinagawa Intercity Tower C, 2-15-3,  
Konan, Minato-ku, Tokyo 108-6290, Japan  
Healthcare Business Unit, phone: +81-3-6433-3705 fax: +81-3-6433-3785  
Industrial Metrology Business Unit, phone: +81-3-6433-3701 fax: +81-3-6433-3784  
<http://www.nikon.com/products/>

ISO 14001 Certified  
for NIKON CORPORATION

**NIKON INSTECH CO., LTD.**

Shinagawa Intercity Tower C, 2-15-3, Konan, Minato-ku, Tokyo 108-6290  
phone: +81-3-6433-3980 fax: +81-3-6433-3784

**NIKON INSTRUMENTS INC.**

1300 Walt Whitman Road, Melville, N.Y. 11747-3064, U.S.A.  
phone: +1-631-547-8500; +1-800-52-NIKON (within the U.S.A. only)  
fax: +1-631-547-0306  
<http://www.nikoninstruments.com/>

**NIKON METROLOGY, INC.**

12701 Grand River Avenue, Brighton, MI 48116 U.S.A.  
phone: +1-810-220-4360 fax: +1-810-220-4300

E-mail: [Sales.US.NM@nikon.com](mailto:Sales.US.NM@nikon.com)

<http://www.nikonmetrology.com/>

**NIKON INSTRUMENTS EUROPE B.V.**

Tripolis 100, Burgenvoeshuispad 101, 1076 ER Amsterdam, The Netherlands  
phone: +31-20-7099-000 fax: +31-20-7099-298  
<http://www.nikoninstruments.eu/>

**NIKON METROLOGY EUROPE NV**

Geldenaaksebaan 329, 3001 Leuven, Belgium  
phone: +32-16-74-01-00 fax: +32-16-74-01-03

E-mail: [Sales.Europe.NM@nikon.com](mailto:Sales.Europe.NM@nikon.com)

<http://www.nikonmetrology.com/>

**NIKON INSTRUMENTS (SHANGHAI) CO., LTD.**

CHINA phone: +86-21-6841-2050 fax: +86-21-6841-2060  
(Beijing branch) phone: +86-10-5831-2028 fax: +86-10-5831-2026  
(Guangzhou branch) phone: +86-20-3882-0550 fax: +86-20-3882-0580

**NIKON INSTRUMENTS KOREA CO., LTD.**

KOREA phone: +82-2-2186-8400 fax: +82-2-555-4415

**NIKON SINGAPORE PTE LTD**

SINGAPORE phone: +65-6559-3651 fax: +65-6559-3668

**NIKON MALAYSIA SDN BHD**

MALAYSIA phone: +60-3-7809-3688 fax: +60-3-7809-3633

**P.T. NIKON INDONESIA**

INDONESIA phone: +62-267-8643949 fax: +62-267-8643950

**NIKON SALES (THAILAND) CO., LTD.**

THAILAND phone: +66-2633-5100 fax: 66-2633-5191

**NIKON INDIA PRIVATE LIMITED**

INDIA phone: +91-124-4688500 fax: +91-124-4688527

**NIKON CANADA INC.**

CANADA phone: +1-905-602-9676 fax: +1-905-602-9953

**NIKON INSTRUMENTS S.p.A.**

ITALY phone: +39-55-300-96-01 fax: +39-55-30-09-93

**NIKON GMBH SWITZERLAND**

SWITZERLAND phone: +41-43-277-28-67 fax: +41-43-277-28-61

**NIKON CEE GMBH**

AUSTRIA phone: +43-1-972-6111 fax: +43-1-972-611-140

**NIKON UK LTD.**

UNITED KINGDOM phone: +44-208-247-1717 fax: +44-208-541-4584

**NIKON METROLOGY UK LTD.**

UNITED KINGDOM phone: +44-1332-811-349 fax: +44-1332-639-881

E-mail: [Sales.UK.NM@nikon.com](mailto:Sales.UK.NM@nikon.com)

**NIKON FRANCE S.A.S.**

FRANCE phone: +33-1-4516-45-16 fax: +33-1-4516-45-55

**NIKON METROLOGY SARL**

FRANCE phone: +33-1-60-86-09-76 fax: +33-1-60-86-57-35

E-mail: [Sales.France.NM@nikon.com](mailto:Sales.France.NM@nikon.com)

**NIKON GMBH**

GERMANY phone: +49-211-941-42-20 fax: +49-211-941-43-22

**NIKON METROLOGY GMBH**

GERMANY phone: +49-6023-91733-0 fax: +49-6023-91733-229

E-mail: [Sales.Germany.NM@nikon.com](mailto:Sales.Germany.NM@nikon.com)