



# Hardware Manual

---

## cellSens [Ver.3.2]

IMAGING SOFTWARE

This hardware manual is for the Olympus imaging software cellSens and microscope digital camera. To ensure safety, obtain optimum performance and familiarize yourself fully with the installation of this software, we recommend that you study this manual thoroughly before operating the software.

For research and education

This system has been designed for research and educational purposes.

Any copyrights relating to this manual shall belong to OLYMPUS CORPORATION. We at OLYMPUS CORPORATION have tried to make the information contained in this manual as accurate and reliable as possible. Nevertheless, OLYMPUS CORPORATION disclaims any warranty of any kind, whether expressed or implied, as to any matter whatsoever relating to this manual, including without limitation the merchantability or fitness for any particular purpose. OLYMPUS CORPORATION will from time to time revise the software described in this manual and reserves the right to make such changes without obligation to notify the purchaser. In no event shall OLYMPUS CORPORATION be liable for any indirect, special, incidental, or consequential damages arising out of purchase or use of this manual or the information contained herein. No part of this document may be reproduced or transmitted in any form or by any means, electronic or mechanical, for any purpose, without the prior written permission of OLYMPUS CORPORATION. Microsoft Windows, Microsoft Word, Microsoft Excel and Microsoft Access are trademarks of Microsoft Corporation which can be registered in various countries. Adobe and Acrobat are trademarks of Adobe Systems Incorporated which can be registered in various countries.

#### Trademark information

Microsoft and Windows are registered trademarks in the USA and other countries of Microsoft Corporation, USA. All of the other brand names and product names mentioned in this manual are trademarks or registered trademarks of their respective owners.

© OLYMPUS CORPORATION

All rights reserved

cellSens3.2\_EN\_01

# Setting up cameras

Install cellSens in advance prior to setting up the camera.

To operate a camera using cellSens, a device driver for each camera must be installed onto PC. If you have already used a camera, it is not necessary to install a device driver.

1. DP80, DP73, DP73WDR .....	1
2. DP74 .....	2
3. DP23, DP28 .....	4
4. Other cameras .....	5

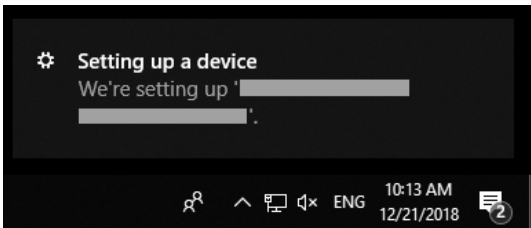
## 1. DP80, DP73, DP73WDR

This section describes the installation procedures using Windows® 10. If using Windows® 8.1 in DP80, DP73 or DP73WDR installation, the operating methods are more or less the same.


Refer to the DP80, DP73 or DP73WDR manual for the installation of hardware.

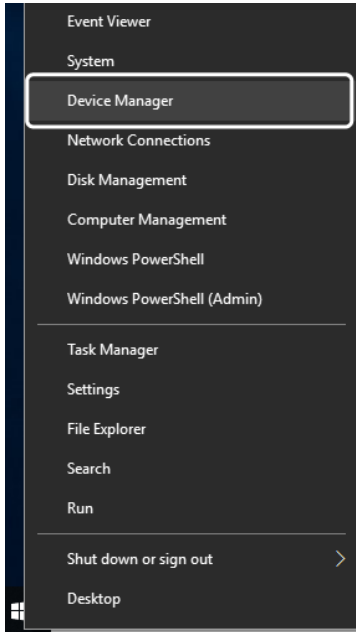
### Installation of DP80, DP73, DP73WDR Driver

When you connect DP80, DP73 or DP73WDR to PC, following icons will be displayed in the lower right area of the PC screen and the device driver will be installed automatically.

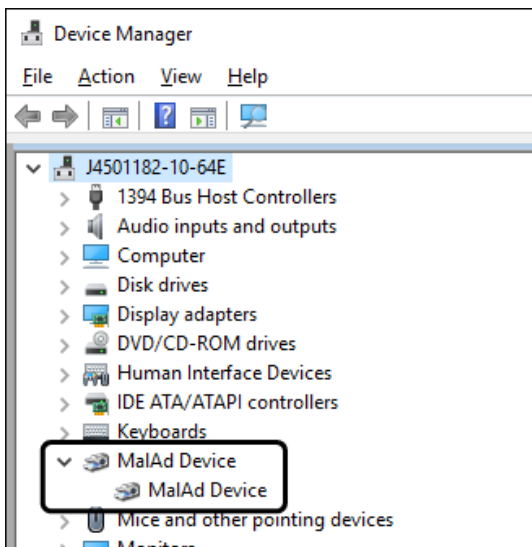


In order to confirm that the device driver is installed properly, please follow the procedures below.

1. Right-click  in the bottom left corner of the screen and click "Device Manager".



2. If a driver is installed, [MalAd Device] appears underneath the item of [MalAd Device]. Double-click on [MalAd Device] so that normal operation can be verified. Close the dialog box after confirmation.



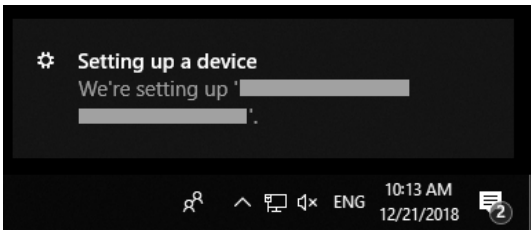
## 2. DP74

This section describes the installation procedures using Windows<sup>®</sup> 10. If using Windows<sup>®</sup> 8.1 in DP74 installation, the operating methods are more or less the same.


Refer to the DP74 manual for the installation of hardware.

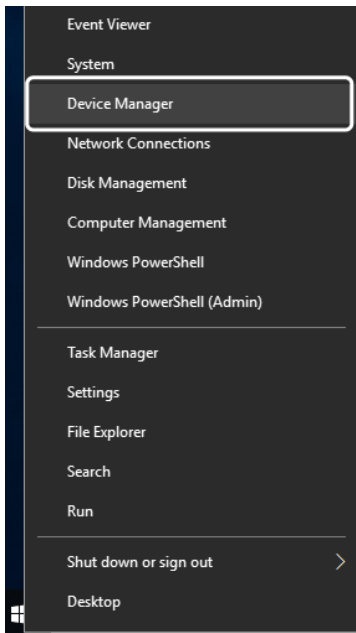
### Installation of DP74 Driver

When you connect DP74 to PC, following icons will be displayed in the lower right area of the PC screen and the device driver will be installed automatically.

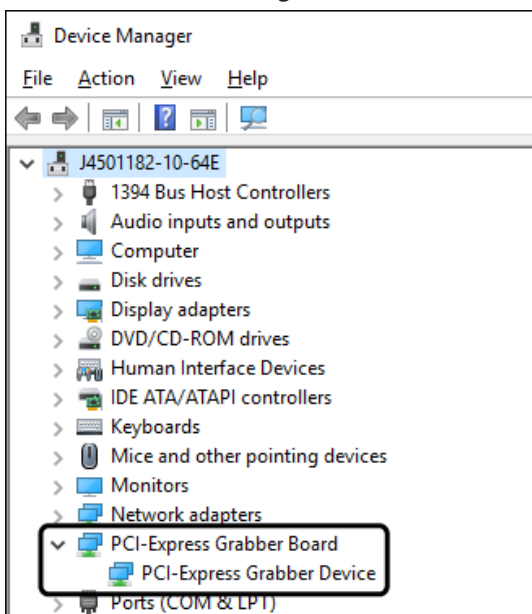


In order to confirm that the device driver is installed properly, please follow the procedures below.

1. Right-click  in the bottom left corner of the screen and click "Device Manager".



2. If a driver is installed, [PCI-Express Grabber Device] appears underneath the item of [PCI-Express Grabber Board]. Double-click on [PCI-Express Grabber Device] so that normal operation can be verified. Close the dialog box after confirmation.



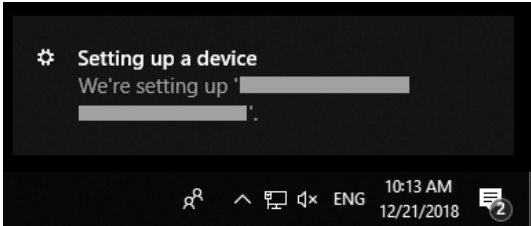
### 3. DP23, DP28

This section describes the installation procedures using Windows® 10. If using Windows® 8.1 in DP23 or DP28 installation, the operating methods are more or less the same.


Refer to the DP23 / DP28 manual for the installation of hardware.

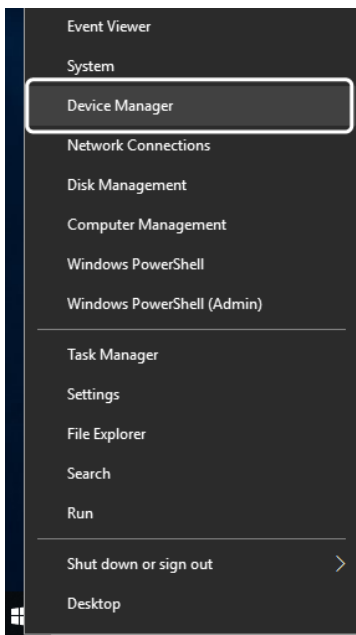
#### Installation of DP23, DP28 Driver

When you connect DP23 or DP28 to PC, following icons will be displayed in the lower right area of the PC screen and the device driver will be installed automatically.

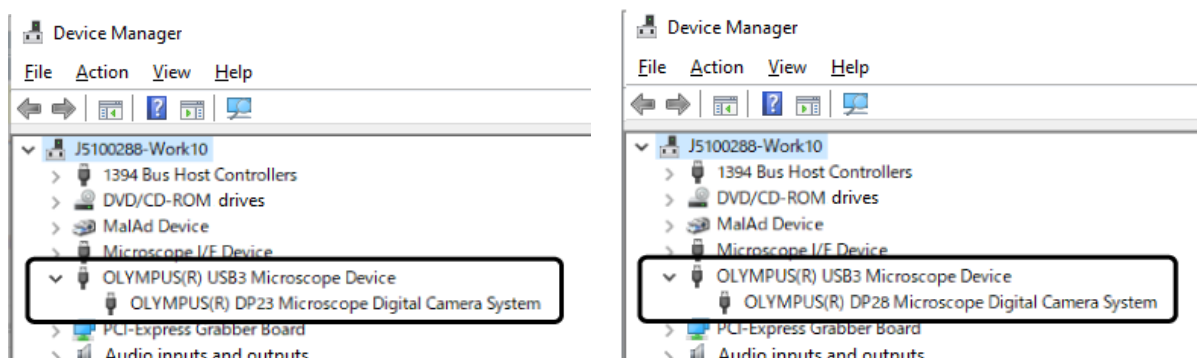


In order to confirm that the device driver is installed properly, please follow the procedures below.

1. Right-click  in the bottom left corner of the screen and click "Device Manager".



2. If a driver is installed, [OLYMPUS(R) DP23 Microscope USB3 Digital Camera System] or [OLYMPUS(R) DP28 Microscope USB3 Digital Camera System] appears underneath the item of [OLYMPUS(R) USB3 Microscope Device]. Double-click on [OLYMPUS(R) DP23 Microscope USB3 Digital Camera System] or [OLYMPUS(R) DP28 Microscope USB3 Digital Camera System] so that normal operation can be verified. Close the dialog box after confirmation.



#### 4. Other cameras

This software can be combined with other cameras in addition to Olympus Digital Camera DP Series for microscope. The cameras combinable to this software differ depending on the grade of cellSens. For details, contact Olympus sales office where you have purchased this product. For the operating procedures of cameras or the installation procedures of device drivers, refer to the Instruction Manual of the relevant camera.

# OLYMPUS

[www.olympus-global.com](http://www.olympus-global.com)

Manufactured by

**OLYMPUS CORPORATION**

Shinjuku Monolith, 2-3-1 Nishi-Shinjuku, Shinjuku-ku, Tokyo 163-0914, Japan

Distributed by

**OLYMPUS EUROPA SE & CO. KG**

Wendenstrasse 14-18, 20097 Hamburg, Germany

**OLYMPUS CORPORATION OF THE AMERICAS**

3500 Corporate Parkway, P.O. Box 610, Center Valley, PA 18034-0610, U.S.A.

**OLYMPUS CORPORATION OF ASIA PACIFIC LIMITED**

Level 26, Tower 1, Kowloon Commerce Centre, No.51 Kwai Cheong Road, Kwai Chung, New Territories, Hong Kong

**OLYMPUS AUSTRALIA PTY LTD**

3 Acacia Place, Notting Hill, 3168, Australia

