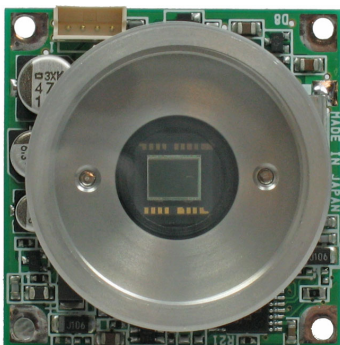
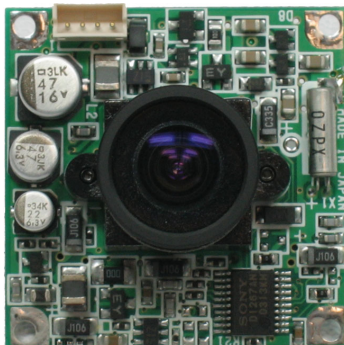


## STC-130/135

The STC-130 Series is an inexpensive, compact camera that can adapt to almost any standard resolution industrial application. This 1/3" standard resolution monochrome camera series comes in board-level and cased version cameras.



STC-130CS



STC-130L4

Images shown not actual size

### Features

- 1/3" IT CCD
- Monochrome
- Standard Resolution
- EIA & CCIR Formats
- Electronic or Fixed Shutter
- Internal Sync
- AGC On
- Compact Size (1.4" x 1.4")
- Cost Effective
- Seven Lens Options

### Specifications >>

Image Sensor:	Black & White: 1/3" Interline CCD STC-130 (EIA) - ICX404AL STC-135 (CCIR) - ICX405AL
Effective Picture Element:	510 (H) x 492 (V)
Signal Format:	EIA (CCIR Format also available - STC-135)
Scanning System:	2:1 Interlace
Horizontal Frequency:	15.734 kHz
Vertical Frequency:	59.9 Hz
Sync System:	Internal
Horizontal Resolution:	380 TV Lines
Minimum Illumination (Standard):	0.05 Lux @ F 1.2, (AGC On) 50 IRE
Minimum Illumination (H Version):	0.03 Lux @ F 1.2, (AGC On) 50 IRE
S/N Ratio:	>48dB (AGC Off)
Gamma:	0.6
AGC:	On ( 0 - 20dB )
Electronic Iris:	(Auto Shutter) 1/60 to 1/100,000 second
Fixed Shutter:	1/60
Video Out:	VS 1.0Vp-p 75 $\Omega$
Power Supply:	12V DC
Power Consumption:	100mA
Operating Temperature:	-10°C ~ 45°C (14°F ~ 113°F)
Storage Temperature:	-30°C ~ 60°C (-22°F ~ 140°F)
Dimensions:	35 (W) x 35 (H) x variable (D) mm (1.4" x 1.4" x variable)
Weight:	15g (.53 oz.)

- Includes all wire harnesses
- Seven lens options available, including CS/C Mount (See Page 2)

\* Cable harnesses for power and other input and output signals are provided with each Sentechn board camera.

## >> STC-130

### Lenses & Mounts

#### Monochrome Board Camera Lenses

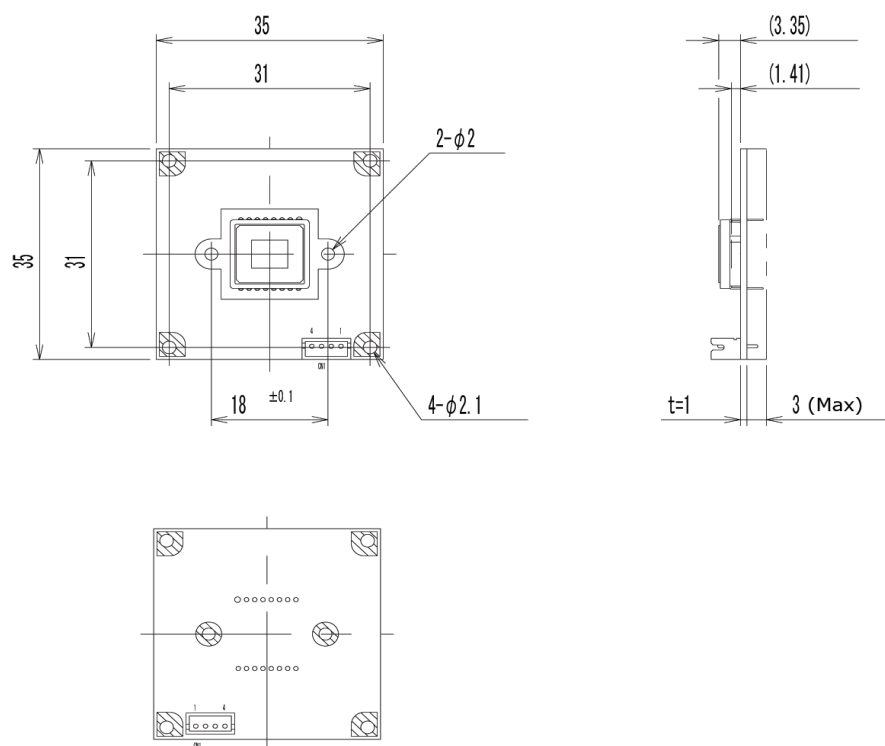
The following lenses are available for all monochrome board cameras.  
Custom lenses can also be built.

Model No.	Focal Length (F-Stop)
LEN-B2.5	2.5mm (F2.0)
LEN-B3.6	3.6mm (F5.0)
LEN-B6	6.0mm (F3.5)
LEN-B8	8.0mm (F3.5)
LEN-B16	16mm (F1.8)

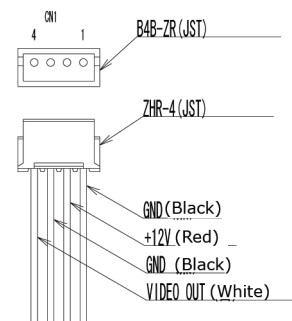
#### Lens Mounts

The CS version of the camera is configured with a standard CS lens mount. By using a C-Mount adapter ring, the CS mount can be converted to a C-Mount. These configurations will allow most CS or C Mount lenses to be used with this camera.

### Mechanical Drawings



#### Wire Harness Connection



**Note:** (Dimensions are given in mm)